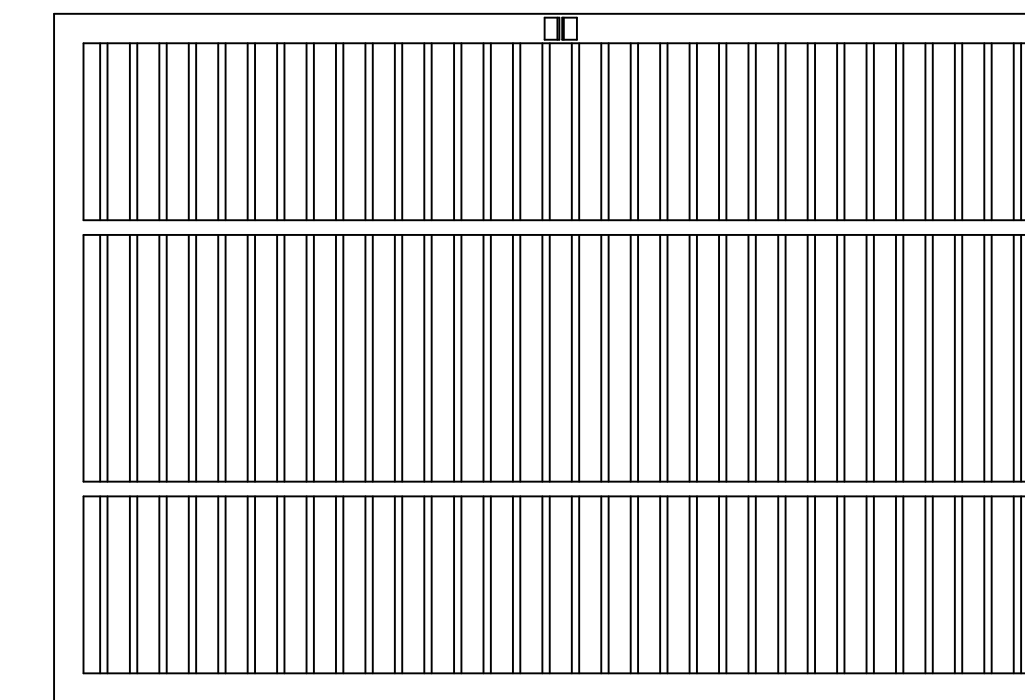
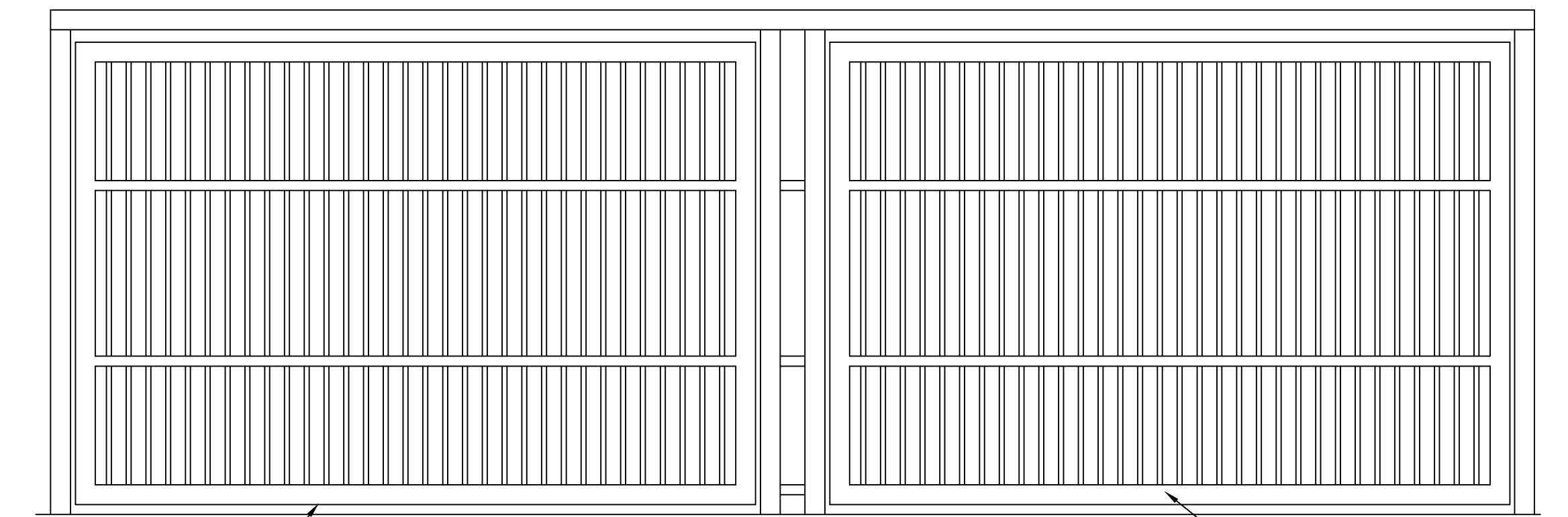


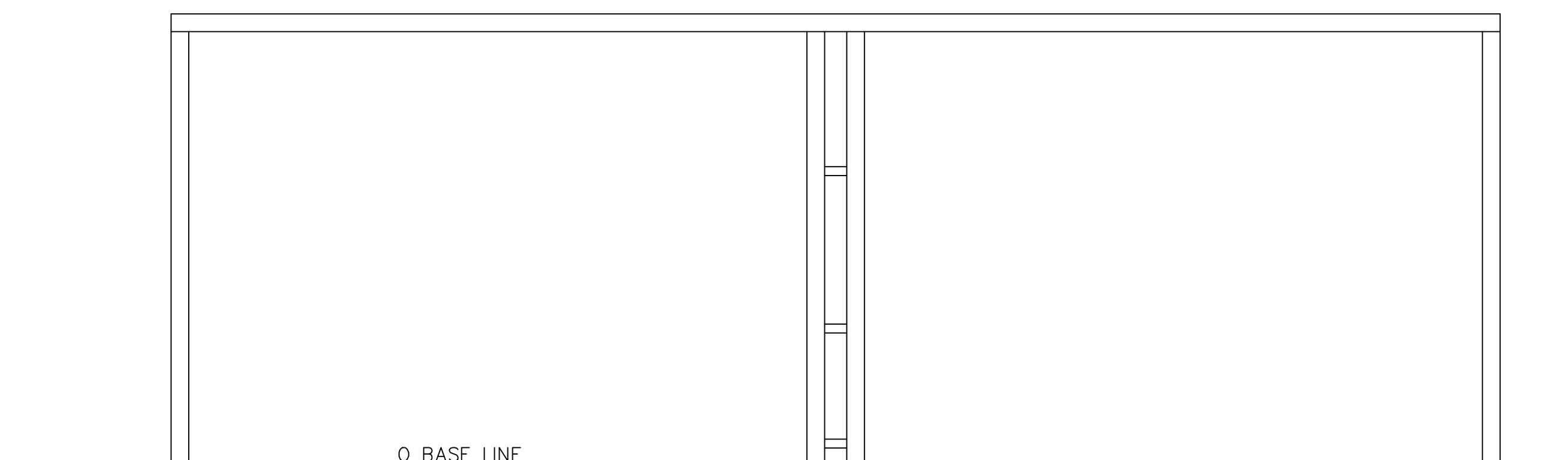
VEHICLE GATE OVERHEAD VIEW



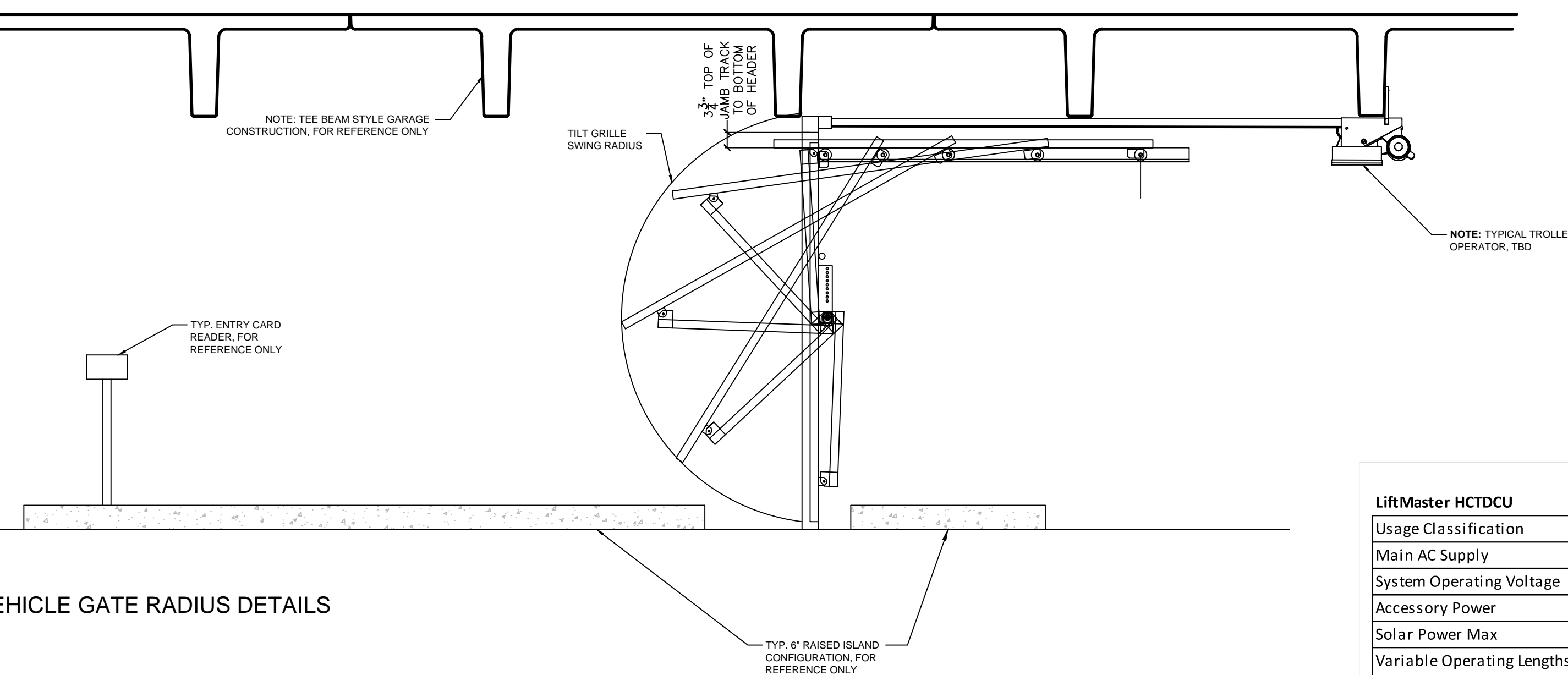
TILT GRILL PANEL DETAILS



VEHICLE GATE SYSTEM ELEVATION



VEHICLE GATE ELEVATION FRAMING DETAILS



VEHICLE GATE RADIUS DETAILS

**FDC STRONGWELD TILT GATE SYSTEM**

INDIVIDUAL LANE OPENINGS UP TO 11'  
MATCHED WITH LIFTMASTER HCTDCU GATE OPERATOR  
(SEE SPECIFICATIONS PROVIDED)

LiftMaster HCTDCU	
Usage Classification	Class II, III, and IV
Main AC Supply	120 Vac, 4 Amps OR 240 Vac, 2 Amps
System Operating Voltage	24 Vdc Transformer Run / Battery Backup
Accessory Power	24 Vdc, 500mA max. for ON + SW (switched)
Solar Power Max	24 Vdc at 60 watts max.
Variable Operating Lengths (Operator Weights)	8 foot (2.4 m) gate - 11.75 foot (3.6 m) operator length (130 lbs. [58.9 kg]) 10 foot (3.1 m) gate - 13.75 foot (4.2 m) operator length (145 lbs. [65.7 kg]) 12 foot (3.7 m) gate - 15.75 foot (4.8 m) operator length (160 lbs. [72.5 kg])
Maximum Gate/Door Weight	700 lbs. (317.5 kg)
Maximum Gate/Door Width (sectional and one-piece)	22 ft. (6.7 m)
Travel Speed	Default - 8 inches (20.3 cm) per second Fast - 11 inches (27.9 cm) per second (open speed only)
Maximum Daily Cycle Rate	Continuous
Maximum Duty Cycle	Continuous
Operating Temperature	-20°C to 60°C (-4°F to 140°F)
Expansion Board	Provided
Inherent Entrapment Protection (Type A)	Dual - RPM and Current Sense
External Entrapment Protection (Type B1 and/or Type B2)	3 inputs per board - any combination of up to 3 photoelectric sensors and up to 2 edge sensors

**FDC** Florida Door Control  
Melbourne, FL 32934

FDC STRONGWELD TILT GATE SYSTEM

PART NO.	JOB NO.
DWG. NO. FSTG1	SCALE N/A BY: BRAWN S.T.
DATE 01/04/2021	SHEET 1