

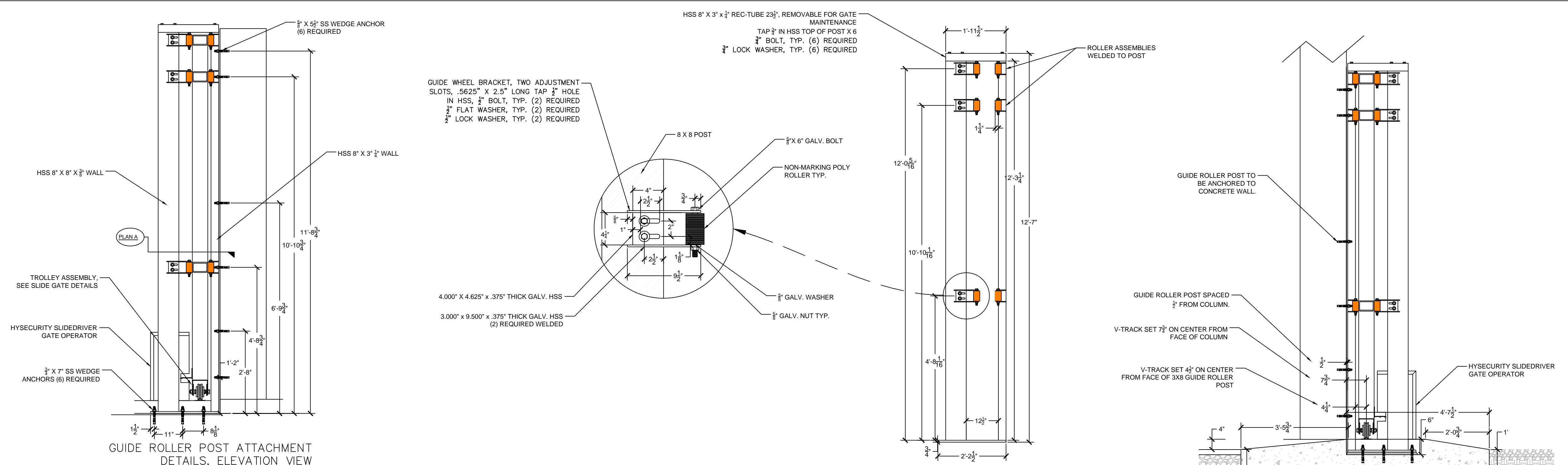
**20' VEHICLE SLIDE GATE DETAILS, ELEVATION**  
 NOTE: PAINTED PER APPROVED SUBMITTALS.

# FDC STRONGWELD HEAVY DUTY SLIDE GATE SYSTEM

DOUBLE CLEAR OPENINGS UP TO 40'  
 MATCHED WITH HYSECURITY SLIDEDRIVER 80 GATE OPERATOR  
 (SEE SPECIFICATIONS PROVIDED ON SHEET 2)

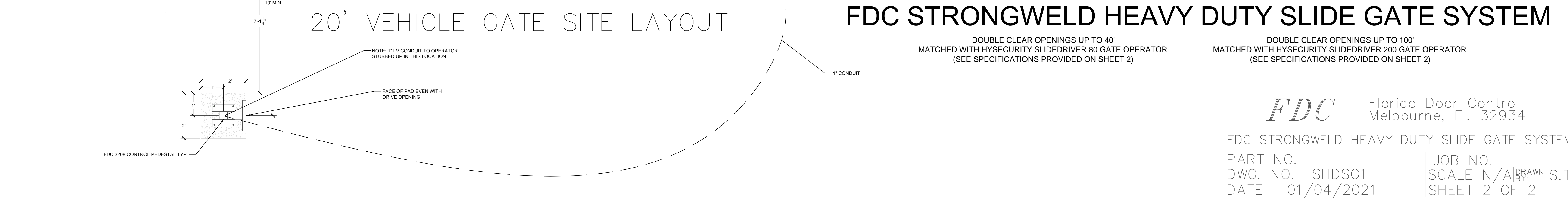
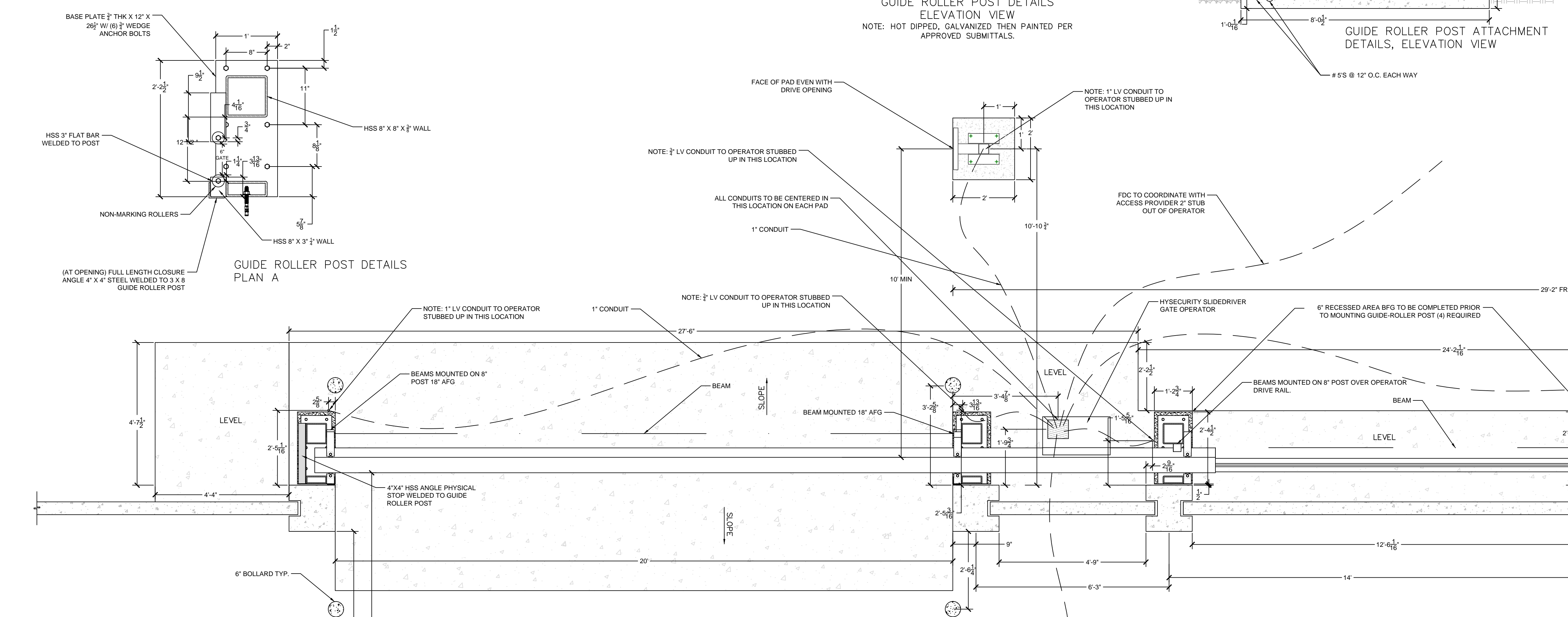
DOUBLE CLEAR OPENINGS UP TO 100'  
 MATCHED WITH HYSECURITY SLIDEDRIVER 200 GATE OPERATOR  
 (SEE SPECIFICATIONS PROVIDED ON SHEET 2)

<b>FDC</b> Florida Door Control Melbourne, FL. 32934	
FDC STRONGWELD HEAVY DUTY SLIDE GATE SYSTEM	
PART NO.	JOB NO.
DWG. NO. FSHDSG1	SCALE N/A BY: BRAWN S.T.
DATE 01/04/2021	SHEET 1 OF 2



HySecurity Slidedriver 80	
Model	Slidedriver 80
Part #	222 X1 ST
Duty Cycle	Continuous
Horsepower	2 hp
Drive	Hydraulic
Drive Wheels	One 8 inch (20 cm) AdvanceDrive wheel, One 8 inch XtremeDrive wheel and 27 ft (8 m) of rack
Gate Weight Max.	8,000 lb (3,629 kg)
Gate Length Max.	Limited only by weight
Drawbar Pull	600 lb (272 kg)
Rate of Travel	1 ft/s (30 cm/s)
Temperature Rating	-40° to 158°F (-40° to 70° C)
1 Phase Power	208/230V 60 Hz 220V 50 Hz***
3 Phase Power	208/230V 60 Hz 220V 50 Hz***
Included Accessories	One premium 80X 18B MON photo eye, one 5-foot premium ASD edge sensor and a pre-wired Hy2NC adapter
Communication	RS-232, RS-485, Ethernet/fiber using optional HyNet™ Gateway accessory
User Controls	Smart Touch Controller with 70+ configurable settings, programmed via the keypad and display or a PC using S.T.A.R.T. software.
Relay	Three configurable user relays: one 30VDC, 3A solid state and two 250VAC, 10A electromechanical; Optional Hy8Relay™ for 8 additional relay outputs
Finish	Zinc plated with powder coating
ETL Listed (UL 325)	Usage Class III, IV
Warranty	5 year w/product registration
UPS Battery Backup Power and Additional Models	
DC Power Supply* 1 with HyCharger DC	Slidedriver 80 UPS
AC Power Supply with HyInverter AC*	-
Correctional Facility	Slidedriver 80 UPS-C
Modular	Slidedriver 80 UPS-M

HySecurity Slidedriver 200	
Model	Slidedriver 200
Part #	444 XS ST
Duty Cycle	Continuous
Horsepower	5 hp/UPS model: 4 hp
Drive	Hydraulic
Drive Wheels	Two 8 inch (20 cm) AdvanceDrive wheels, Two 8 inch XtremeDrive wheels and 52 ft (16 m) of rack
Gate Weight Max.	20,000 lb (9,072 kg)
Gate Length Max.	Limited only by weight
Drawbar Pull	1,200 lb (544 kg)
Rate of Travel	1 ft/s (30 cm/s)
Temperature Rating	-40° to 158°F (-40° to 70° C)
1 Phase Power	230V 60 Hz 220V 50 Hz***
3 Phase Power	208/230/460V, 220/380/440V 50Hz***
Included Accessories	Pre-wired Hy2NC adapter
Communication	RS-232, RS-485, Ethernet/fiber using optional HyNet™ Gateway accessory
User Controls	Smart Touch Controller with 70+ configurable settings, programmed via the keypad and display or a PC using S.T.A.R.T. software.
Relay	Three configurable user relays: one 30VDC, 3A solid state and two 250VAC, 10A electromechanical; Optional Hy8Relay™ for 8 additional relay outputs
Finish	Zinc plated with powder coating
ETL Listed (UL 325)	Usage Class III, IV
Warranty	5 year w/product registration
UPS Battery Backup Power and Additional Models	
DC Power Supply* 1 with HyCharger DC	Slidedriver 200 UPS**
AC Power Supply with HyInverter AC*	-
Correctional Facility	Slidedriver 200-C
Modular	Slidedriver 200-M



# FDC STRONGWELD HEAVY DUTY SLIDE GATE SYSTEM

DOUBLE CLEAR OPENINGS UP TO 40'  
MATCHED WITH HYSECURITY SLIDEDRIVER 80 GATE OPERATOR  
(SEE SPECIFICATIONS PROVIDED ON SHEET 2)

DOUBLE CLEAR OPENINGS UP TO 100'  
MATCHED WITH HYSECURITY SLIDEDRIVER 200 GATE OPERATOR  
(SEE SPECIFICATIONS PROVIDED ON SHEET 2)

<b>FDC</b> Florida Door Control Melbourne, FL 32934	
FDC STRONGWELD HEAVY DUTY SLIDE GATE SYSTEM	
PART NO.	JOB NO.
DWG. NO. FSHDSG1	SCALE N/A BY: BRAWN S.T.
DATE 01/04/2021	SHEET 2 OF 2